



## Vessel Description

Vessel Type	Double Hull Tank Barge	Flag	U.S.A.
Service	Petroleum Service Oil Cargo	Builder	Vigor Fab
Cargo Type	Multi grade Petroleum	Place Built	Portland, OR
Official Number	1268451	Year Built	2016
IMO/Other #	137	Designer	Jensen Maritime
Hail Port	Wilmington, DE	Owner	Hyak Leasing LLC

## Dimensions

Length Regular	312.8
Length Overall	326'-0
Beam Molded	84'-0"
Depth Molded, to the Main Deck	28'-0
Draft Molded (Approx. Max. Loaded)	20'-0"
ITC GT	5,765
ITC NT	2,893
Deadweight	10,207

## Regulatory

Classification	ABS *A1, Oil Barge, SH
Certificate	Load Line
USCG Insp	Y
Registry	Y
Coastwise	Y
Title XI	N
CCF	N

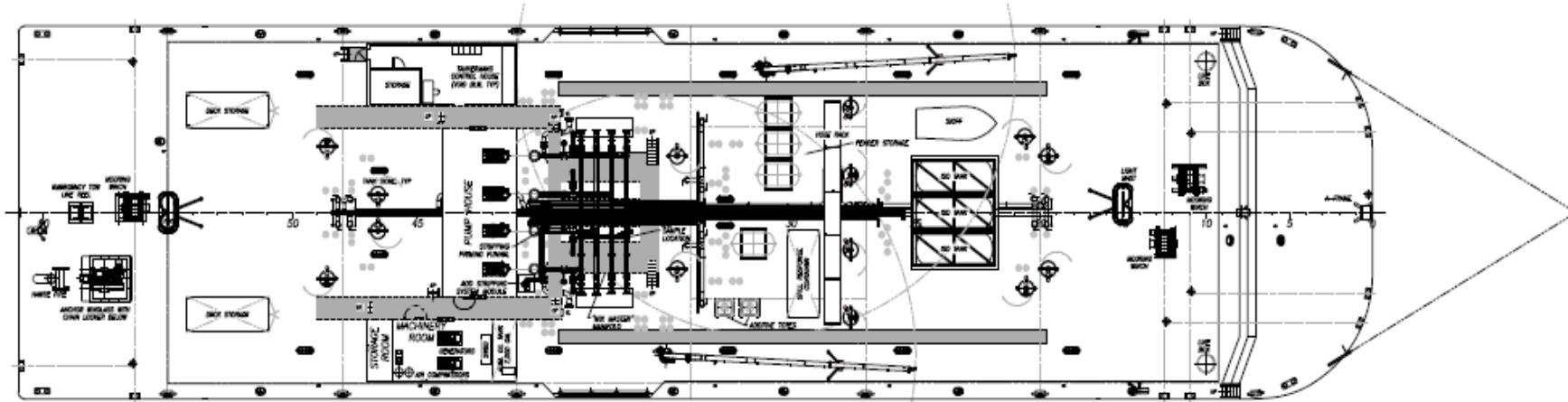
## Capacities

Cargo Oil (@ 98% capacity)	71,500 BBL nominal
----------------------------	--------------------

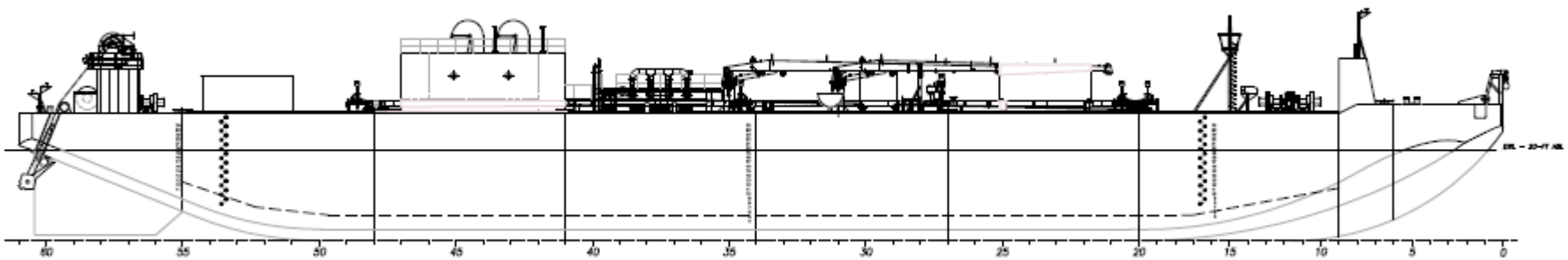
# ANTRIL S

## GENERAL ARRANGEMENT PLAN

[www.cookinlettug.com](http://www.cookinlettug.com)



**MAIN DECK PLAN**  $\Delta^1$   
SCALE: 3/32"=1'-0"



**OUTBOARD PROFILE**  $\Delta^2$   
SCALE: 3/32"=1'-0"